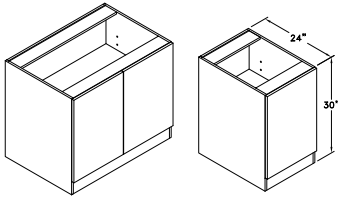


# Other Rooms **TBK188412**

Code Width Height Depth

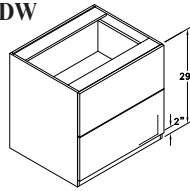
- Standard Other Room cabinet height is 78" or 84".
- Most 24" wide cabinets are available with 1 or 2 doors.

**HUTCH BASE - HB**



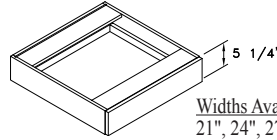
Widths Available:  
18", 21", 24-1", 24-2",  
27", 30", 33", 36", 39",  
42", 45" & 48"

**WIDE FILE DRAWER - FDW**



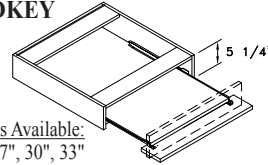
Widths Available:  
27", 30", 33" & 36"

**LAP DRAWER - LD**



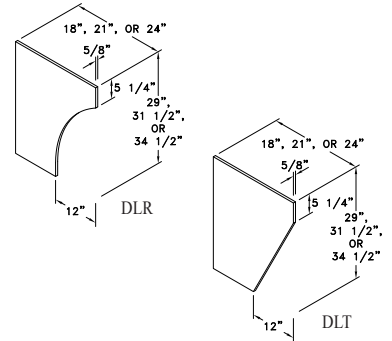
Widths Available:  
21", 24", 27", 30",  
33" & 36"

**KEYBOARD LAP DRW - LDKEY**

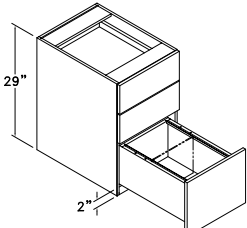


Widths Available:  
24", 27", 30", 33"  
& 36"

**DESK LEG TAPERED - DLT**  
**DESK LEG RADIUS - DLR**

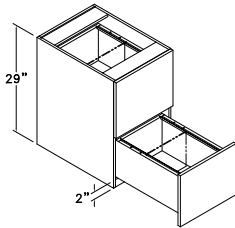


**DESK FILE DRAWER W/ INTEGRAL FILE SYSTEM - D1FDIF**



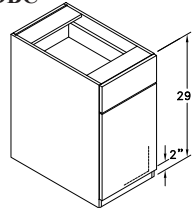
Width Available:  
18"

**DESK TWO FILE DRW W/ INTEGRAL FILE SYSTEM - D2FDIF**



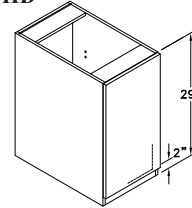
Width Available:  
18"

**DESK BASE CABINET - DBC**



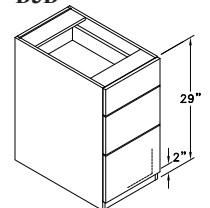
Widths Available:  
12", 15", 18", 21", 24-1",  
24-2", 27", 30", 33" & 36"

**DESK FULL HIGH DOOR - DFHD**



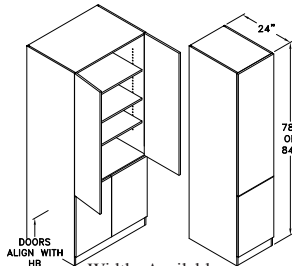
Widths Available:  
12", 15", 18", 21", 24-1",  
24-2", 27", 30", 33" & 36"

**DESK 3 DRAWER - D3D**



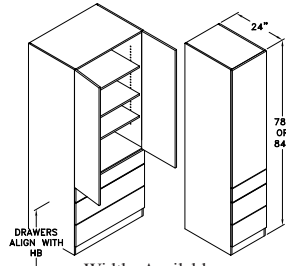
Widths Available:  
12", 15", 18", 21"  
& 24"

**TALL HUTCH W/ FULL HEIGHT DRS - THFH**



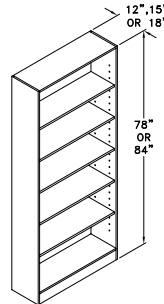
Widths Available:  
18", 21", 24-1", 24-2",  
27", 30", 33" & 36"

**TALL HUTCH W/ 3 DRWS - TH3D**



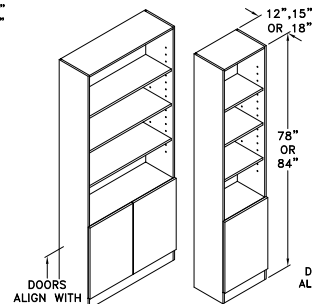
Widths Available:  
18", 21", 24-1", 24-2",  
27", 30", 33" & 36"

**TALL BOOKSHELF CAB'T - TBK**



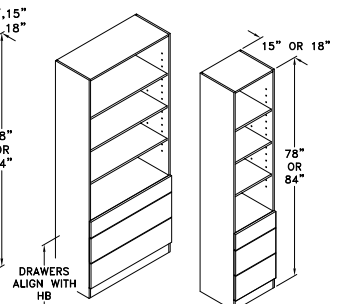
Widths Available:  
18", 21", 24", 27",  
30", 33" & 36"

**TALL OPEN HUTCH W/ FHD - TOHFH**



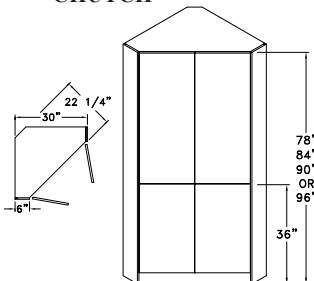
Widths Available:  
18", 21", 24-1", 24-2",  
27", 30", 33" & 36"

**TALL OPEN HUTCH W/ 3 DRAWERS - TOH3D**

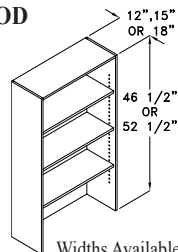


Widths Available:  
18", 21", 24", 27",  
30", 33" & 36"

**TALL CORNER HUTCH - CHUTCH**



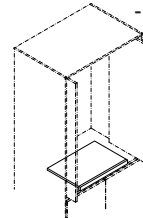
**HUTCH OPEN DISPLAY - HOD**



Widths Available:  
18", 21", 24", 27",  
30", 33" & 36"

## Other Room Accessories

**TV SWIVEL SHELF - TSS**



**ELECTRONIC MEDIA SHELF - EMS**

